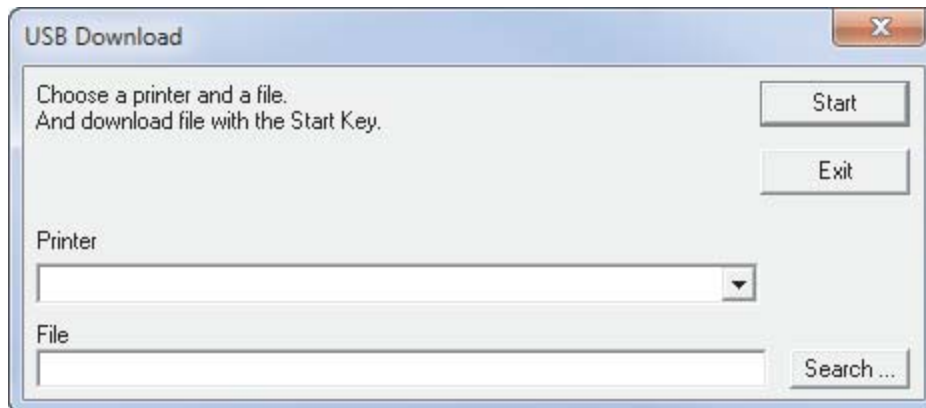


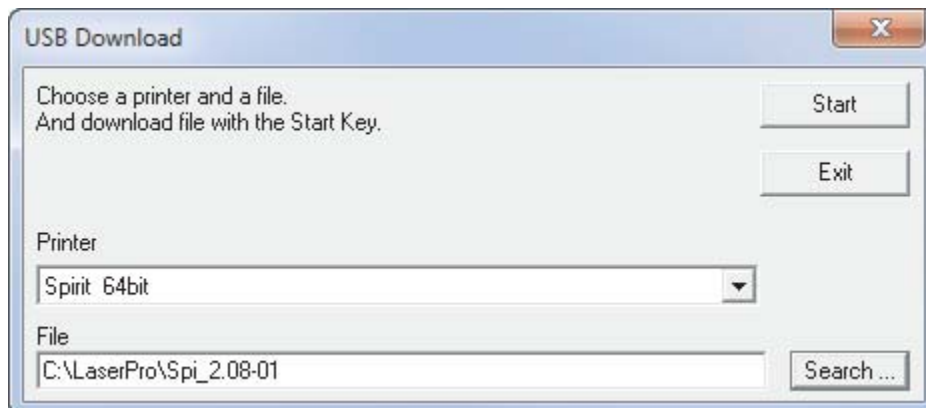
How to Upgrade the Firmware on the Spirit.

(Your laser may be connected in any configuration ie USB, Parallel, Print Server, or via your Network.)

1. Download the complete Firmware Upgrade Zip file. The complete package includes the firmware, upgrader program, and the directions.
2. Unzip the this file by double clicking it. Depending on how your computer opens up zip files either follow the **Extract** or **Unzip** directions and save it on the **C** Drive.
3. Using **Windows Explorer** or **My Computer** go to the **LaserPro** folder that was just created and open it.
4. Double click on the **USB Download.exe** file. You should have a screen like this.



5. Click on the **Printer down arrow**. Choose the Laser you wish to upgrade the firmware on.
6. Select **Search** and double click on the Firmware file. In this example we are using **Spi_2.08-01**.





8. On the **Spirit** hold down the **F2** button if you are connected via the **Parallel** Port (Lpt1).or hold down the **F3** if you are connected via the **USB** port.
9. Turn **On** the **Spirit** and continue to hold the **F2**, or **F3** button until the laser display says **Boot Loader in parallel script**, or (**USB script**).
10. Press the Start button on the **USB Download** program. When the process has finished choose the **Exit** option.
11. **If** you did everything correctly the laser display will be flashing various messages. When the firmware has fully loaded the **Spirit** will initialize itself. Once it has fully turned on and homed itself press the **F4** for **Function** on the control panel of the **Spirit**
12. Press the **Down Arrow** once to **Machine Settings**.
13. Press the **Enter** Key
14. Press the **Up Arrow** to reach **Reset**
15. Press **Enter** and use the **Down Arrow** to choose **System**
16. Press **Enter**, and **Enter** again to Confirm when prompted.
17. After completed turn **Off** the **Spirit** and after 10+ seconds you may turn it on and use it.