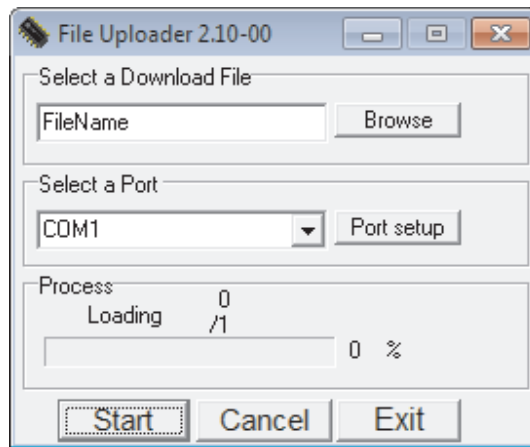




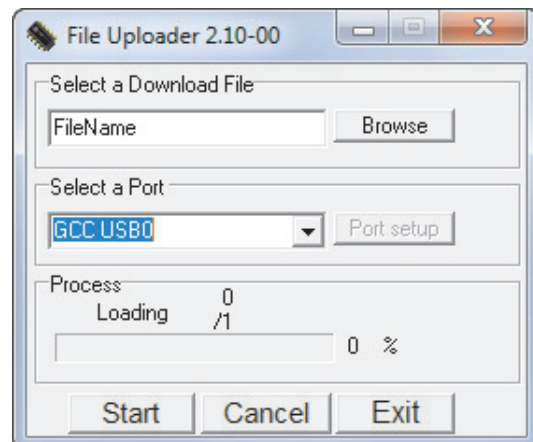
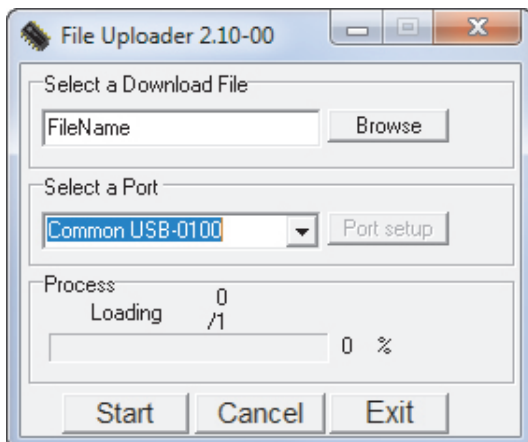
www.LaserProNA.com  
LaserPro Dealers of North America

## How to Upgrade the Firmware on a Mercury III, or Spirit Series LaserPro.

1. Download the complete Firmware Upgrade Zip file. The complete package includes the firmware, upgrader program, and the directions.
2. Unzip the this file by double clicking it. Depending on how your computer opens up zip files either follow the **Extract** or **Unzip** directions and save it on the C Drive.
3. Using **Windows Explorer** or **My Computer** go to the **LaserPro** folder and open the **Uploader** folder.
4. Double click on the **Uploader.exe** file. You should have a screen like this.



5. Select **Browse** and double click on the Firmware version by going up 1 folder to the LaserPro folder. Locate the firmware file. In this example we are using **Spi\_2.12-05**.
6. Click on the arrow in the **Select a Port** area. Choose the port your laser is connected to.
7. Generally it will be **Lpt1** for Printer Cable, or one of the USB options **Common USB-xxxx**, or **GCC USBx**. If you are not sure which USB connection to select press **F4** on the laser Control Panel. Press **Down Arrow** once to **Machine settings** and press **Enter**. Press **UP Arrow** to **USB Setup Wizard** and press **Enter**. The right side of the screen will say either **"Common"** ("Vista" on very old Firmware), or **GCCUSB**.





8. On the **Control Panel** hold down the **F2** button if you are using the Parallel connection (Lpt1). For USB cables hold down the **F1** for **Common**, **F3** if you are connected using **GCCUSB**.
9. Turn **On** the laser and continue to hold the **F1**, **F2**, or **F3** button until the laser display says **Boot Loader in parallel script**, or (**USB script**).
10. Press the **Start** button on the **UpLoader** program. When the process bar reaches 100% choose the **Exit** option.
11. **If** you did everything correctly the laser display will be flashing various messages. When the firmware has fully loaded the laser will initialize itself. Once it has fully turned on and homed itself press the **F4** for Function on the control panel of the laser.
12. Press the **Down Arrow** once to **Machine Settings**.
13. Press the **Enter** Key.
14. Press the **Up Arrow** once to reach **Reset**.
15. Press **Enter** and use the **Down Arrow** to choose **System**.
16. Press **Enter**, and **Enter** again to confirm when prompted.